

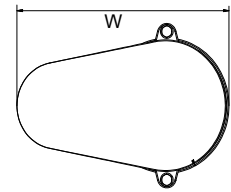
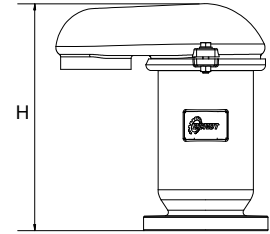
DAV-MH

High Capacity Combination and Kinetic Valves

Dimensions & Weights

Nom. diameter		Height H		Width W		d-Kinetic orifice area		Approx. shipping Weight	
inch	mm	inch	mm	inch	mm	inch ²	mm ²	kg	lbs
2	50	10.7	273.5	9.2	236	3.0	1960	11	24.2
3	80	14	355	12.8	326	7.7	5000	18	39.6
4	100	15.5	395	15.4	393	12.2	7855	30	66.1
6	150	19.1	486.5	24.4	621	27.4	17670	60	132.3
8	200	22.3	567	19.8	503	48.7	31415	100	220.5
10	250	29.6	752	27.8	707.5	76	49090	200	441

Connections: ISO, ANSI, BS, JIS flanges, BSP, NPT threads (50mm valves only)

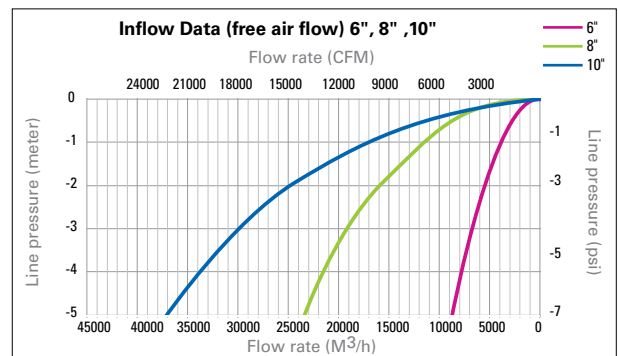
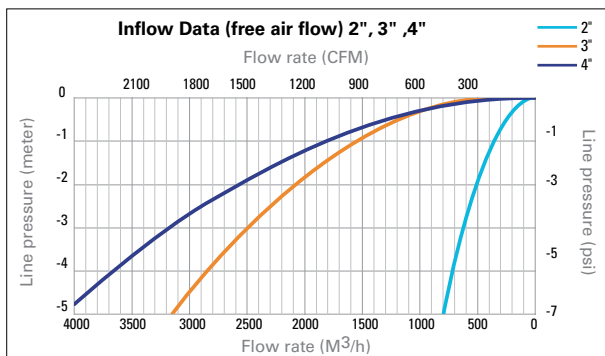
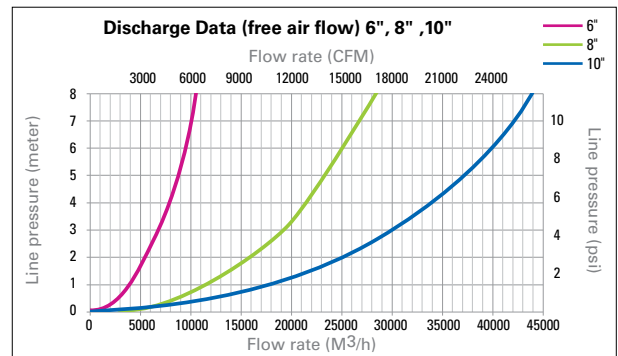
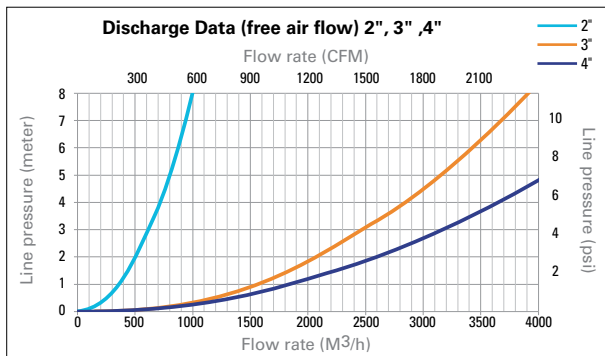


Specifications

Nominal sizes	2" / 50mm to 10" / 250mm
Pressure rating	PN16 (250 psi), PN25 (350 psi) and PN40 (580 psi)
Minimal pressure for drip-tight sealing	0.1 bar *
Temp. Range	Operating: 0-60°C / 32-140°F Storage: -10-70°C / 15-160°F

* For size 2" - please consult with Dorot engineers

Aero-Dynamic Performance



Small-orifice ('Automatic') discharge flow

