

"GALIL" RIGID-SEAL HYDRAULIC VALVES MODELS 09, 09-AN, 09-T, 09-AN-T



MODEL 09



MODEL 09-T



MODEL 09-AN

DESCRIPTION

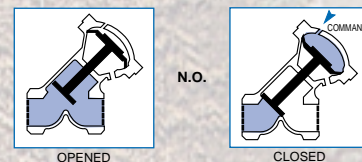
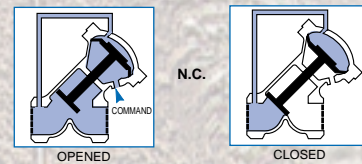
The diaphragm actuated, rigid-seal, hydraulic valve is produced in two patterns:

1. Oblique Pattern (standard)
2. Angle Pattern (marked "AN").

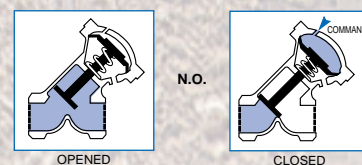
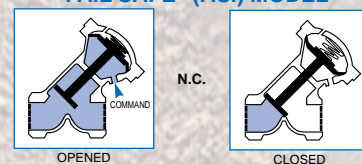
The same actuator is used for both patterns. "Normally open", "Normally closed", "Fail-safe" and "Throttling" versions are available.

- An external pipe connection converts the basic valve to the N.C. version.
- A spring, installed inside the actuator, creates a "fail-safe", version N.O. or N.C.
- A throttling device, limiting valve opening, is optional for all versions.

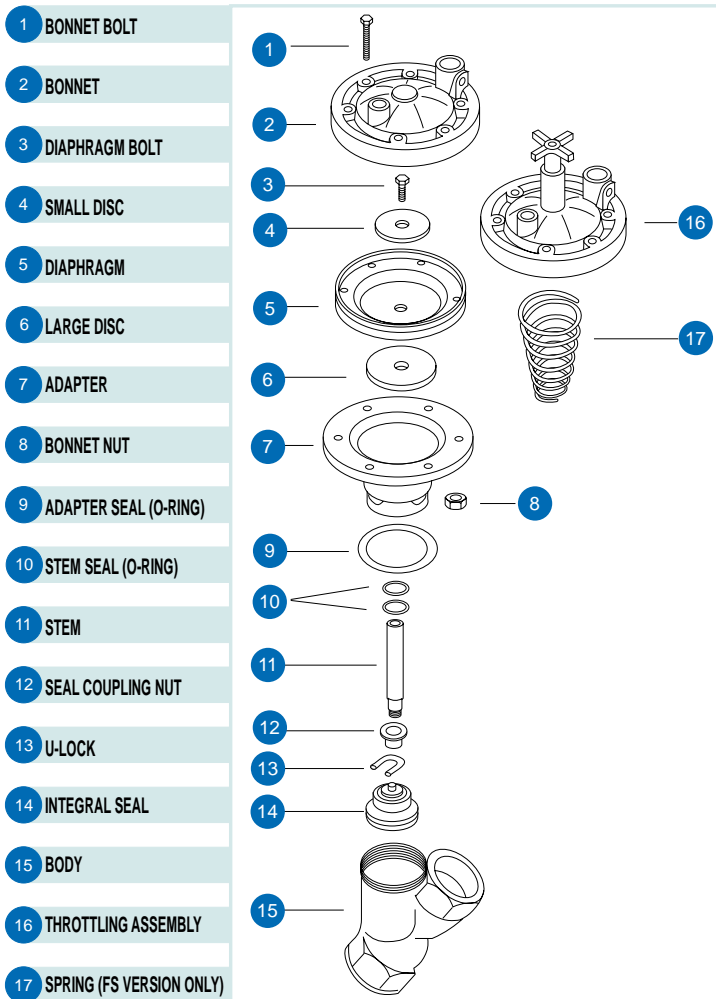
STANDARD MODEL



"FAIL SAFE" (F.S.) MODEL



COMPONENTS



ORDERING GUIDE

Example: Selected, is the angle patterned valve, "normally-closed" (hydraulic), allowing for flow control. The threads meet the American Standard.

SPECIFY:

■ **MODEL**

09, 09-T, 09-AN, 09-AN-T

■ **PATTERN (NOT REQUIRED FOR OBLIQUE MODEL)**

(AN)

■ **VERSION**

(N.C., N.O., FS/NC, FS/NO, T)

■ **THREAD STANDARD**

(BSP, NPT)

09 - AN - T/NC - NPT

