

"GALIL" RIGID-SEAL HYDRAULIC VALVES MODELS 09, 09-AN, 09-T, 09-AN-T



MODEL 09



MODEL 09-T



MODEL 09-AN

DESCRIPTION

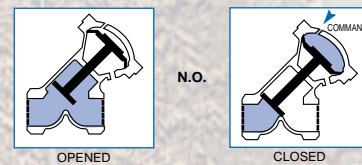
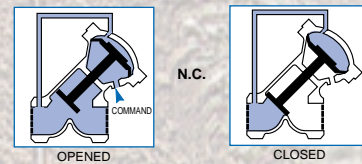
The diaphragm actuated, rigid-seal, hydraulic valve is produced in two patterns:

1. Oblique Pattern (standard)
2. Angle Pattern (marked "AN").

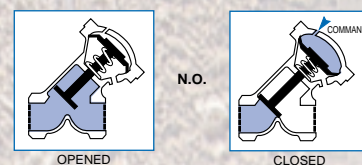
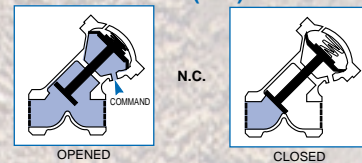
The same actuator is used for both patterns. "Normally open", "Normally closed", "Fail-safe" and "Throttling" versions are available.

- An external pipe connection converts the basic valve to the N.C. version.
- A spring, installed inside the actuator, creates a "fail-safe", version N.O. or N.C.
- A throttling device, limiting valve opening, is optional for all versions.

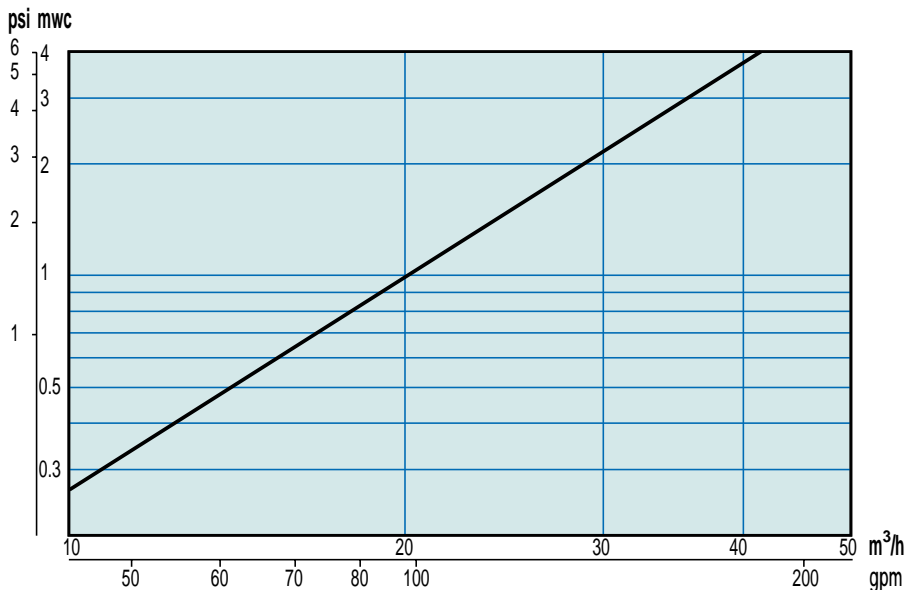
STANDARD MODEL



"FAIL SAFE" (F.S.) MODEL



HEADLOSS CHART



SPECIFICATIONS

MATERIALS

BODY ----- BRASS
 ACTUATOR HOUSING ----- CAST BRONZE
 BONNET ----- GLASS REINFORCED POLYAMIDE
 DISCS ----- BRASS
 STEM ----- SST
 O-RINGS ----- NBR RUBBER
 SEAL ----- NR RUBBER
 DIAPHRAGM ----- NR RUBBER
 SPRING ----- SST

FLOW FACTOR

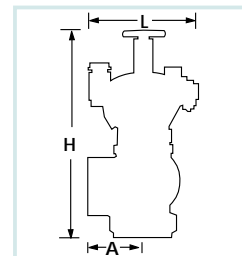
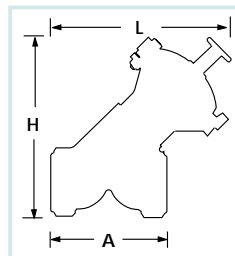
MODEL	Kv	Cv
09, 09-AN, 09-T, 09-AN-T	63	73

CONNECTIONS

THREADS ----- FEMALE 50 mm ISO (BSP)
 2" ANSI (NPT)
 BODY CONTROL BORE ----- ¼" NPT

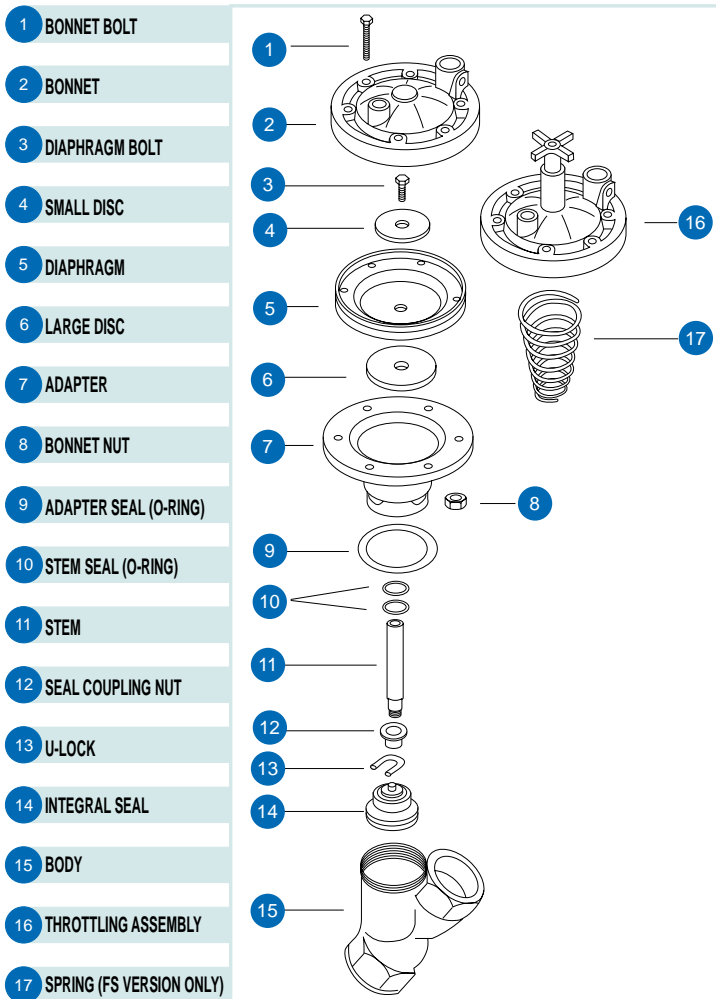
DIMENSIONS

MODEL	A		L		H	
	mm	Inch	mm	Inch	mm	Inch
09	125	5	193	7 5/8	196	7 3/4
09-AN	66	2 5/8	130	5 1/8	192	7 5/8
09-T	132	5 1/4	219	8 5/8	235	9 1/4
09-AN-T	67	2 5/8	131	5 1/8	260	10 1/4



THE FACTORY RESERVES THE RIGHT TO MODIFY SPECIFICATIONS WITHOUT PRIOR NOTICE.

COMPONENTS



ORDERING GUIDE

Example: Selected, is the angle patterned valve, "normally-closed" (hydraulic), allowing for flow control. The threads meet the American Standard.

SPECIFY:

MODEL

09, 09-T, 09-AN, 09-AN-T

PATTERN (NOT REQUIRED FOR OBLIQUE MODEL)

(AN)

VERSION

(N.C., N.O., FS/NC, FS/NO, T)

THREAD STANDARD

(BSP, NPT)

09 - AN - T/NC - NPT