



DSD-A

Single Jet Water Meter Magnetic Drive



Applications

Single Jet water meter magnetic drive, used to measure the volume of cold potable water passing through the pipeline. For industrial/municipal use.

Features

- Magnetic Drive (Dry Type)
- Sealed register
- Small body and light weight
- Coated body, made of corrosion resistant copper alloy
- Magnetic Shield

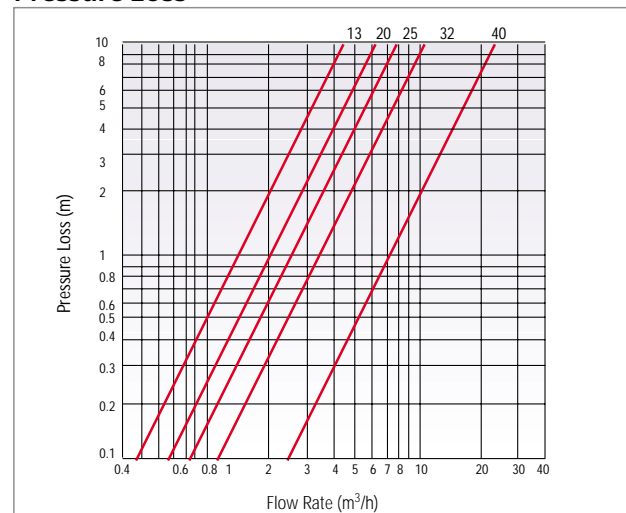
Technical Data

- Max working temperature: 50°C
- Max Working Pressure: 10 BAR
- Installation - Horizontal (for Class B)
- Performance comply with ISO 4064 Class B Standard

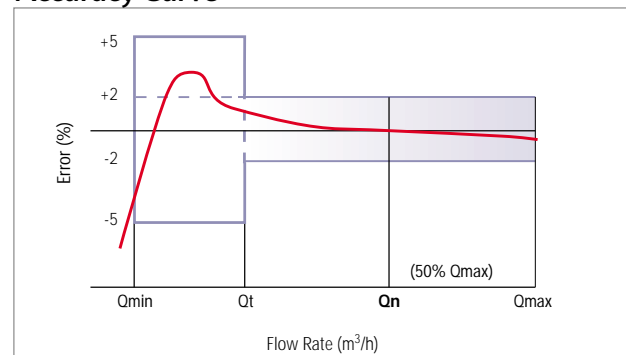
Options

- Equipment with option for electrical output
- Water meter for hot water up to 90°C, are available

Pressure Loss

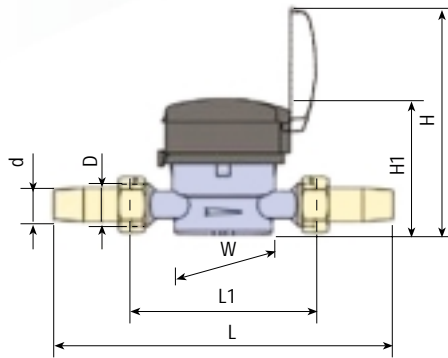


Accuracy Curve



DSD-A

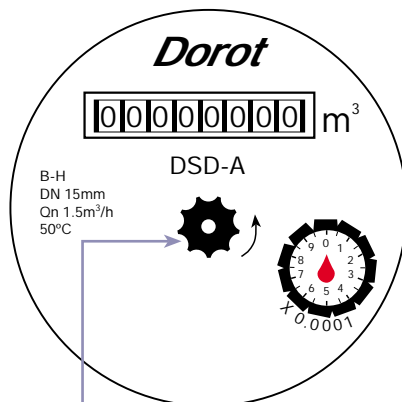
Single Jet Water Meter Magnetic Drive



DSD-13D3-40D3

Dimensions and Weight

Model	Size mm	End Thread	Length (mm) L	Length (mm) L1	Width (mm) W	Height (mm) H	Height (mm) H1
DSD-13D	13	G3/4B	204	110	80	143	88
DSD-20D	20	G1B	234	130	80	143	88
DSD-25D	25	G1B	280	160	80	151	96
DSD-32D	32	G1B	284	160	110	178	123
DSD-40D	40	G2B	331	200	110	178	123



Flow Sensor

A small rotating "star" in the center of the dial plate helps to detect even the smallest flow through the meter.

Main Technical Data

Model	Size mm	Class ISO 4064	Qmax m ³ /h Max. Flow	Qn (m ³ /h) Nom. Flow	Qt L/h Transitional Flow	Qmin L/h Min. Flow	Min Reading m ³	Max Reading m ³	Weight kg
DSD-13D	13	B	3	1.5	120	30	0.0001	99999	0.8
DSD-20D	20	B	5	2.5	200	50	0.0001	99999	0.9
DSD-25D	25	B	7	3.5	280	70	0.0001	99999	1.47
DSD-32D	32	B	12	6	480	120	0.0001	99999	2.56
DSD-40D	40	B	20	10	800	200	0.0001	99999	2.9

How to Order

Model	Optional	Diameter	Flange Standard	*Electrical Output
DSD	AF - Standard (with preparation for Electrical Output)	1/2" - 1 1/2"	BSP	V - Volume
	AE - With Electrical Output	13mm - 40mm	NPT	

